



BII

Tier 2 Grants & Job Support Scheme



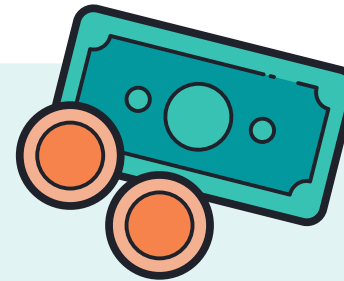
Announced
22nd Oct

A significant fall in socialising is causing profound economic uncertainty for businesses that can stay open.

Rishi Sunak has announced a new grant scheme & two changes to existing schemes...

[Learn more about the grants available here](#)

- **New grant scheme in Tier 2** - Every business in hospitality can receive **up to** £2,100 per month.
- Local authorities are receiving the equivalent of the following for their hospitality venues:
 - **£934** for rateable values of **£15k** and under
 - **£1,400** for rateable values from **£15,001** up to **£51k**
 - **£2,100** for rateable values of **£51k** and over



Local
Authorities will
distribute the
grants

This is retrospective!

Any businesses who were under enhanced local restrictions can claim - backdated to August 2020.

New changes to the Job Support Scheme



- Available to employees now working less hours, down to **20%** of their original shifts.



- Employer contribution will now only be **5%** for any hours not worked.



- Available to all businesses and workers in **all** tier levels, allowing the business to remain open (can also be in Tier 3 if operating collection or takeaway service).

[Read the Government's Factsheet here](#)

Changes to the Self Employed Income Support Scheme



- This has been increased to 40% of your usual income up to a maximum of £3,750 (an increase from £1,875).

[Read more about the changes to the Self Employed support here](#)

The Job Support Scheme is open from 1st November 2020.

[Read about support for Tier 3 businesses here](#)